



Ivy | Chair

Rose branches cast in brass support the Ivy chair, defined by a sculptural presence and a delicately organic expression. Between rigour and fluidity, the design reveals a subtle balance between material, texture, and lightness. The irregularity of the surface preserves the memory of the branches, intensifying the tactile dimension and the singular character of the composition.

AS PICTURED

MATERIALS & FINISHES

Structure: Cast brass with Antique Brass finishing.

Upholstery: Solum, ref. S02, Chestnut.

DIMENSIONS

W: 480 mm | 18,9"

D: 580 mm | 22,8"

H: 790 mm | 31,1"

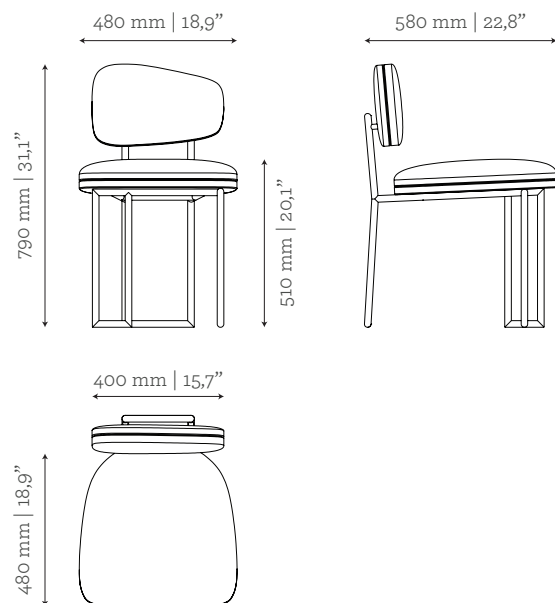
SH: 510 mm | 20,1"

CUSTOM/BESPOKE

This product is not suitable for customization.

ENVIRONMENT

This product is made for living areas in interior spaces only. This product is not specified for bathrooms, spa's or humid environments. Not suitable for exteriors.



VOLUME

0,22 m³ | 7,77 ft³

WEIGHT

18 kg | 39,7 lbs

Packed (in reinforced carton case)

0,29 m³ | 10,24 ft³

24 kg | 52,9 lbs

PRODUCT OPTIONS

Ivy | Chair

MATERIALS & FINISHES

Structure: Cast brass with Brass, Antique Brass, Silver, Antique Silver, Copper or Antique Copper.

Upholstery: Available in Solum fabric collection.
Also available in Client's Own Fabric or Leather.

Structure:



BRASS
Brass



ANTIQUE BRASS
Brass with patina



SILVER
Brass with silver leaf



ANTIQUE SILVER
Brass with silver leaf and patina



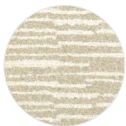
COPPER
Brass with copper leaf



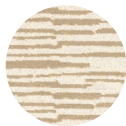
ANTIQUE COPPER
Brass with copper leaf and patina

Upholstery:

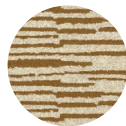
Solum Collection
56% recycled PES + 44% PES | Martindale 40.000



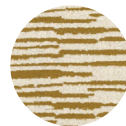
S01 Snow



S02 Chestnut



S03 Camel



S04 Saffron



S05 Carbon

Client's Own Fabric or Leather requirements:

Fabric: 2,5 m | 98,4"
Based on plain fabric, standard width 1,40 m | 55"

Leather: 50 square feet