



Dolmen | 88 Bookcase

The Dolmen 88 Bookcase combines a precise architectural language with a strong sculptural presence. Handcrafted with a lacquered finish, the piece articulates solid volumes and open spaces through a rigorous balance of structure, proportion, and visual lightness. Its horizontal composition reinforces the monolithic character of the form, creating a functional storage piece with a strong architectural presence within the space.

AS PICTURED

MATERIALS & FINISHES

Structure: Lacquered in Green with gloss finishing.

DIMENSIONS

W: 2400 mm | 94,5"

D: 460 mm | 18,1"

H: 880 mm | 34,6"

CUSTOM/BESPOKE

This product is not suitable for customization.

ENVIRONMENT

This product is made for living areas in interior spaces only. This product is not specified for bathrooms, spa's or humid environments. Not suitable for exteriors.

VOLUME

0,97 m³ | 34,3 ft³

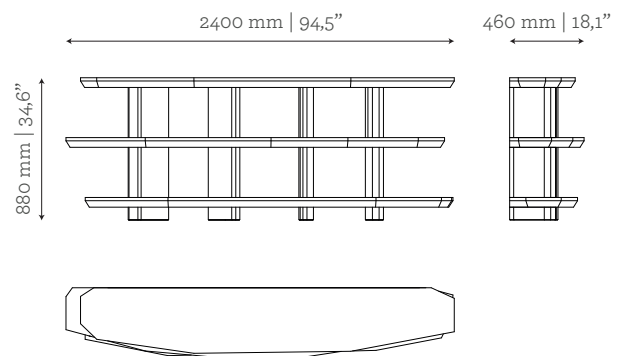
WEIGHT

170 kg | 374,8 lbs

Packed (in wooden case)

1,37 m³ | 48,4 ft³

300 kg | 661,4 lbs



GINGER & JAGGER

PRODUCT OPTIONS

Dolmen | 88 Bookcase

MATERIALS & FINISHES

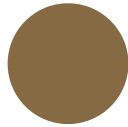
Structure: Lacquered in all RAL and NCS colours with matt or gloss finish.



CREAM
NCS S
1010 - Y20R



STONE
NCS S
2005 - Y30R



OLIVE GREEN
NCS S
6020 - Y10R



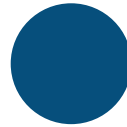
GREEN MOSS
RAL 7003



SAGE
NCS S
7010 - G50Y



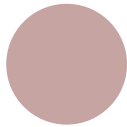
GREEN
RAL 6009



ULTRAMARINE
RAL 5010



SKY
NCS S
2020 - R80B



LAVENDER
NCS S
3010 - R



CHERRY
RAL 3005



CORAL
NCS S
4050 - Y90R



MIOSOTIS
NCS S
3010 - B70G



NIGHT JUNGLE
NCS S
8502 - G