



## Lily | Coffee Table

Springing from a low base made of fig tree branches in brass casting, the Lily Coffee Table creates a dynamic presence from its layered tops and the handcrafted wood marquetry. A delicate balance for a living space.

### AS PICTURED

#### MATERIALS & FINISHES

**Tops:** American Walnut veneer inlay marquetry with matt finishing

**Legs:** Cast Brass with Brass finishing

#### DIMENSIONS

W: 161 cm | 63,3"

D: 110 cm | 43,3"

H: 42 cm | 16,5"

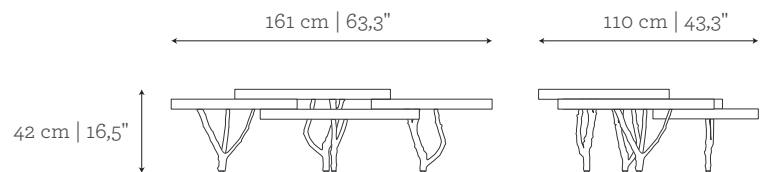
#### CUSTOM/BESPOKE

Suitable for custom size. Range between:

W 145 cm | 57" - 195 cm | 76,7"

D 100 cm | 39,3" - 115 cm | 45,2"

H 35 cm | 13,7" - 81 cm | 31,8"



#### ENVIRONMENT

This product is made for living areas in interior spaces only. This product is not specified for bathrooms, spa's or humid environments. Not suitable for exteriors.

#### VOLUME

0,75 m<sup>3</sup> | 26,49 ft<sup>3</sup>

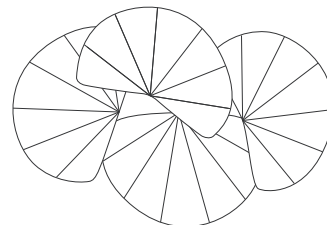
#### WEIGHT

59 kg | 130,1 lbs

#### Packed (in wooden case)

1,27 m<sup>3</sup> | 44,85 ft<sup>3</sup>

157 kg | 346,1 lbs



## PRODUCT OPTIONS

Lily | Coffee Table

### MATERIALS & FINISHES

**Tops:** American Walnut, Ebony, Amara Ebony or Olive Ash wood veneer with matt or gloss finishing

**Legs:** Brass, Antique Brass, Silver, Antique Silver, Copper or Antique Copper

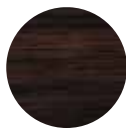
#### Tops:



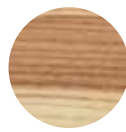
AMERICAN  
WALNUT



EBONY



AMARA  
EBONY



OLIVE ASH

#### Legs:



BRASS  
Brass



ANTIQUE BRASS  
Brass with patina



SILVER  
Brass with  
silver leaf



ANTIQUE SILVER  
Brass with silver  
leaf and patina



COPPER  
Brass with  
copper leaf



ANTIQUE COPPER  
Brass with copper  
leaf and patina